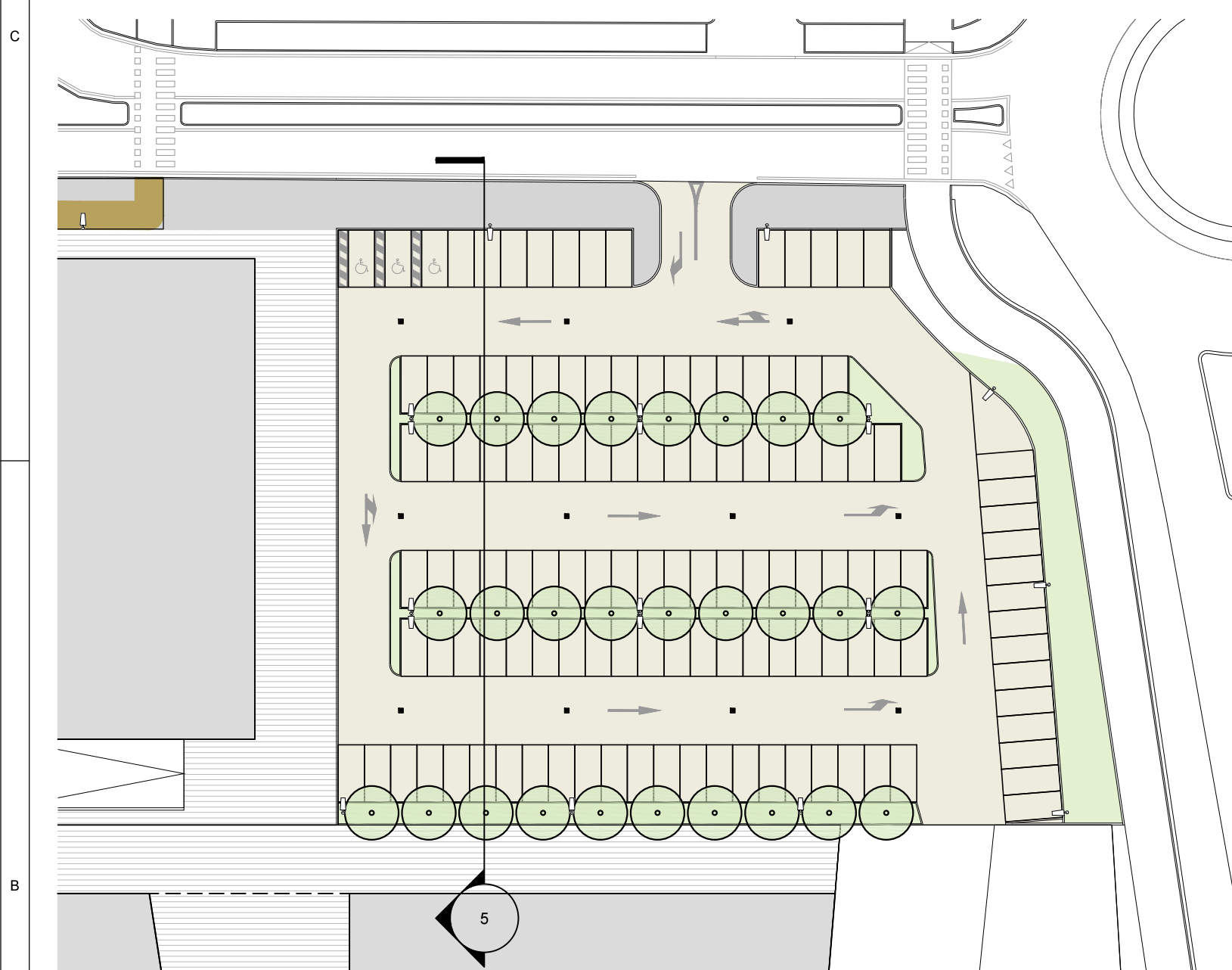
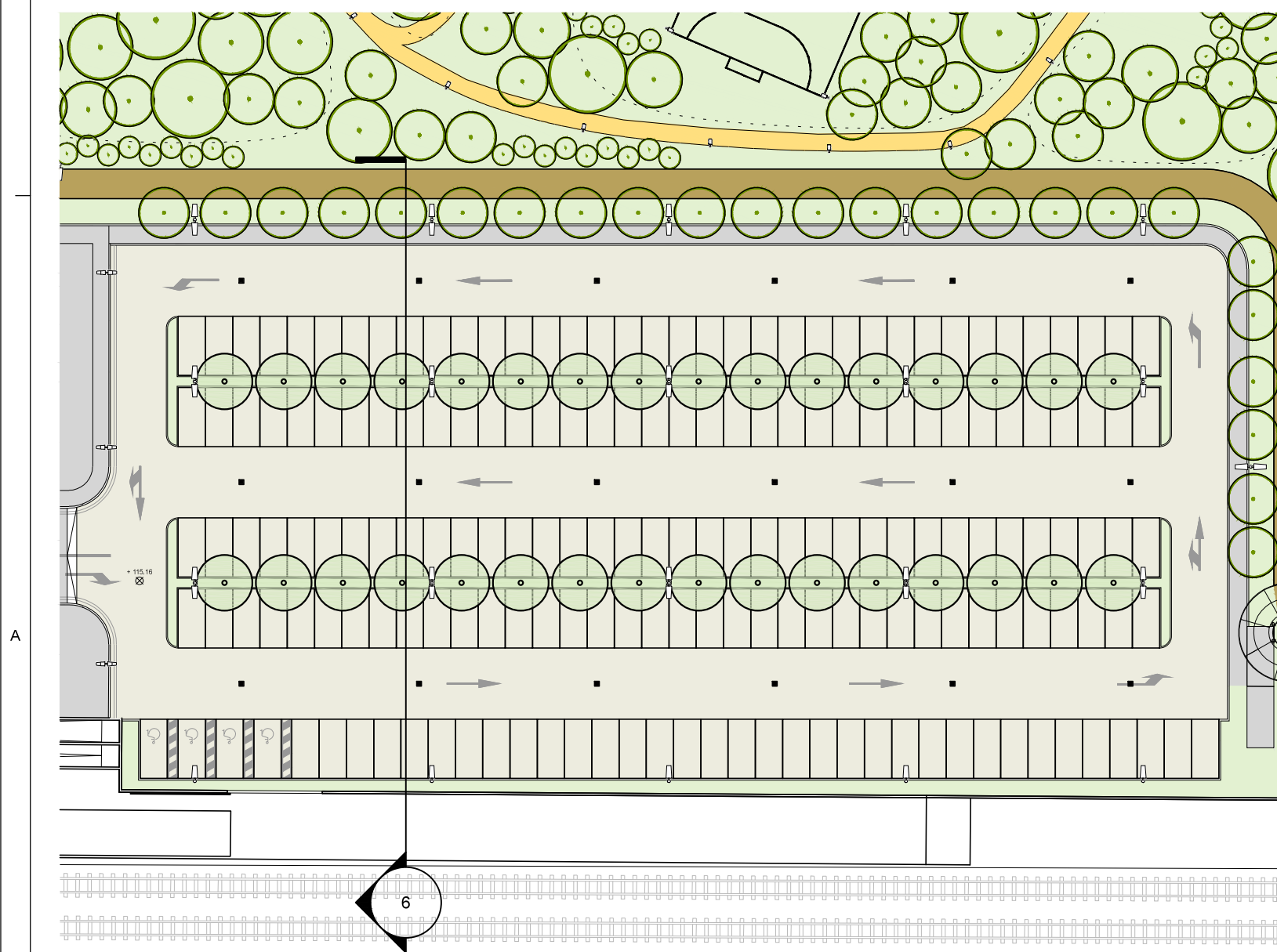


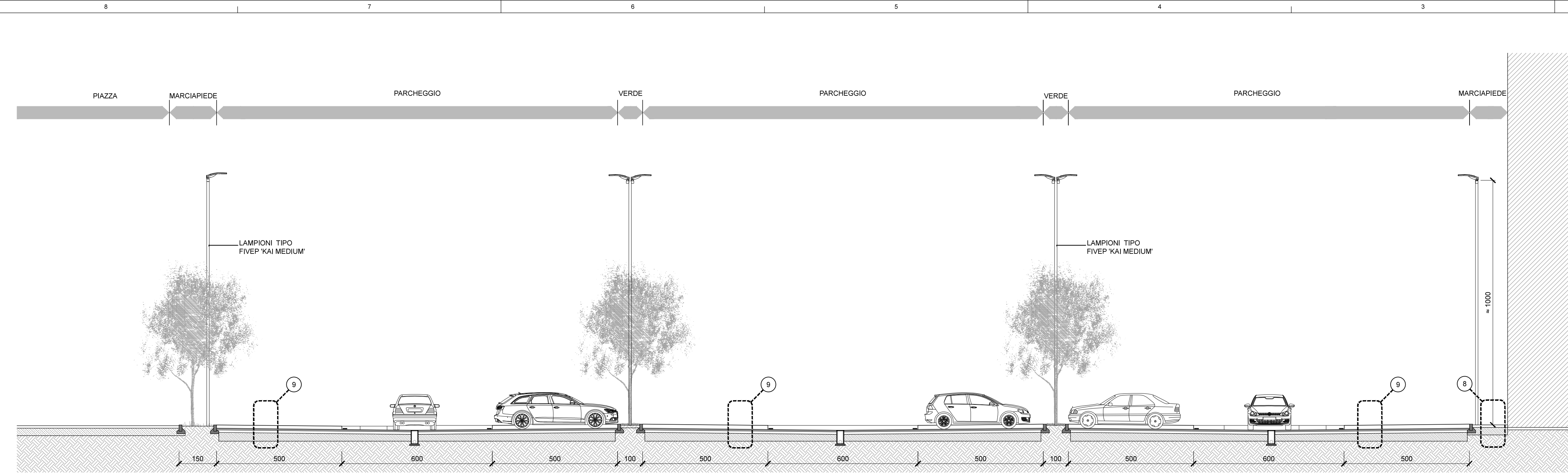
1 LOTTO RESIDENZIALE - PARCHEGGIO 12  
1:500



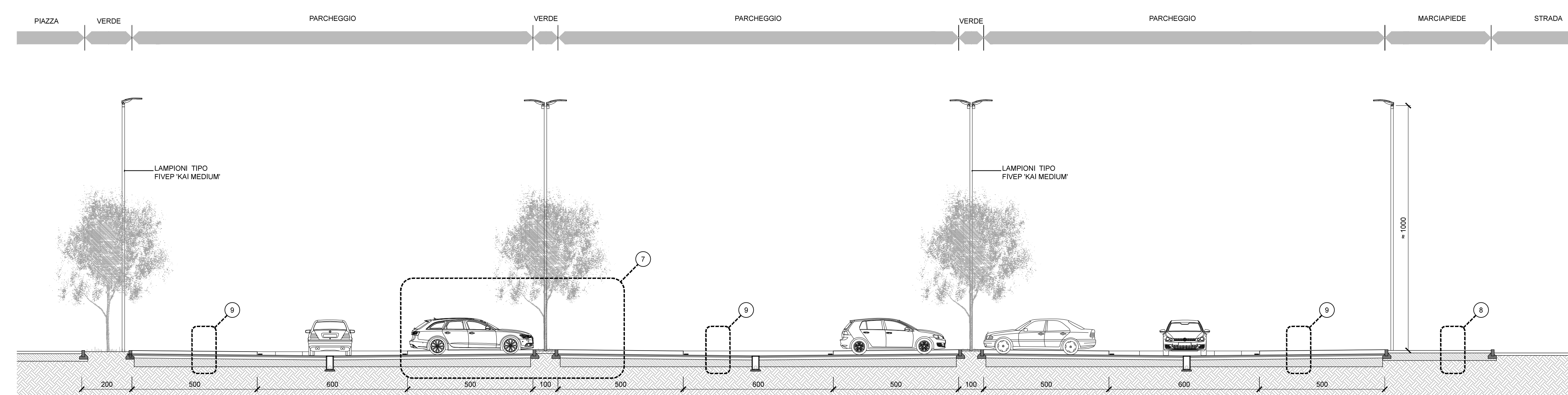
2 LOTTO COMMERCIALE - PARCHEGGIO 13  
1:500



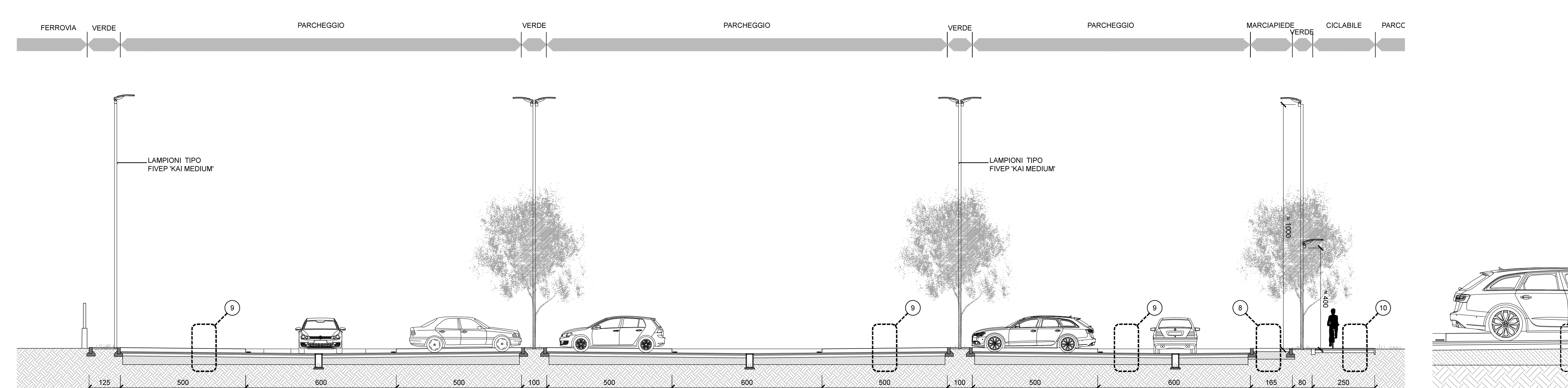
3 LOTTO STAZIONE - PARCHEGGIO 14  
1:500



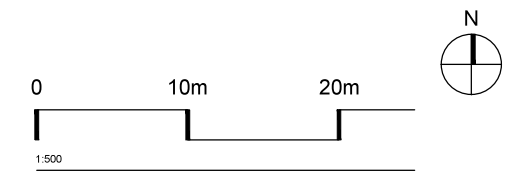
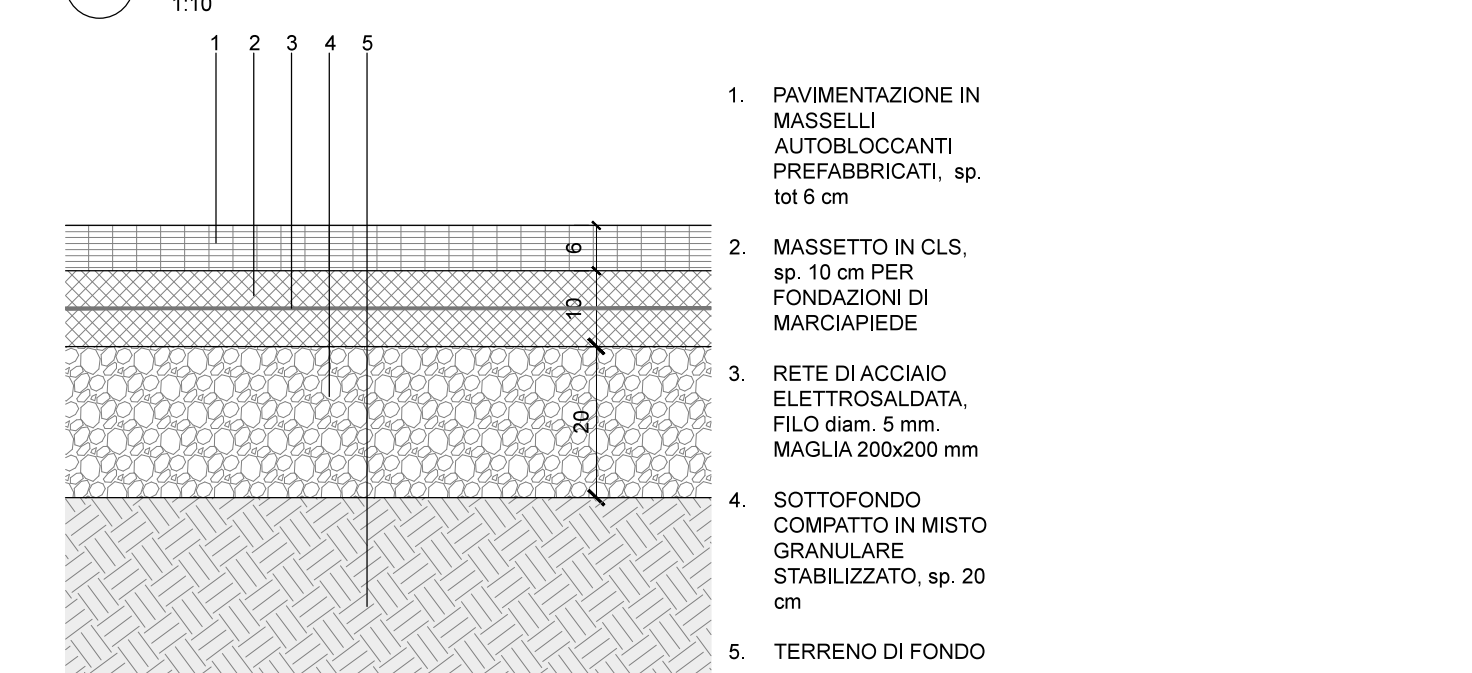
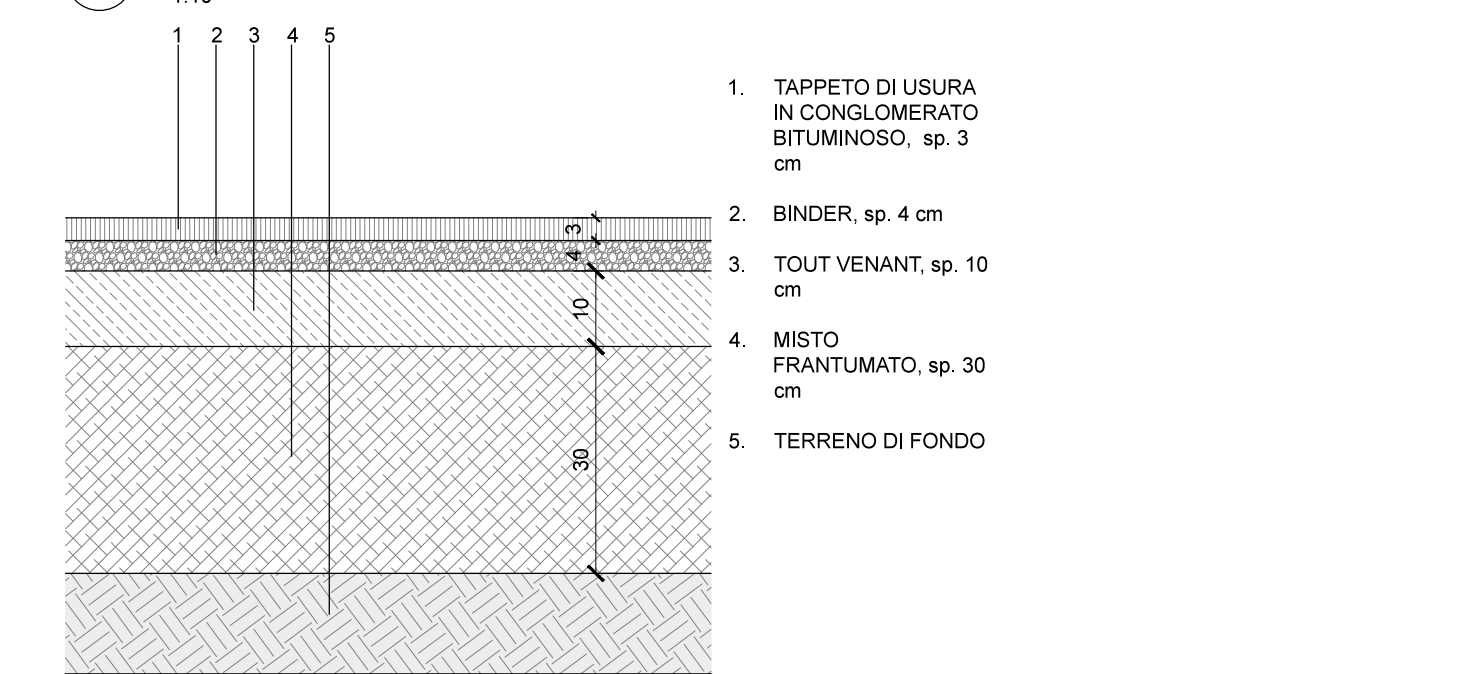
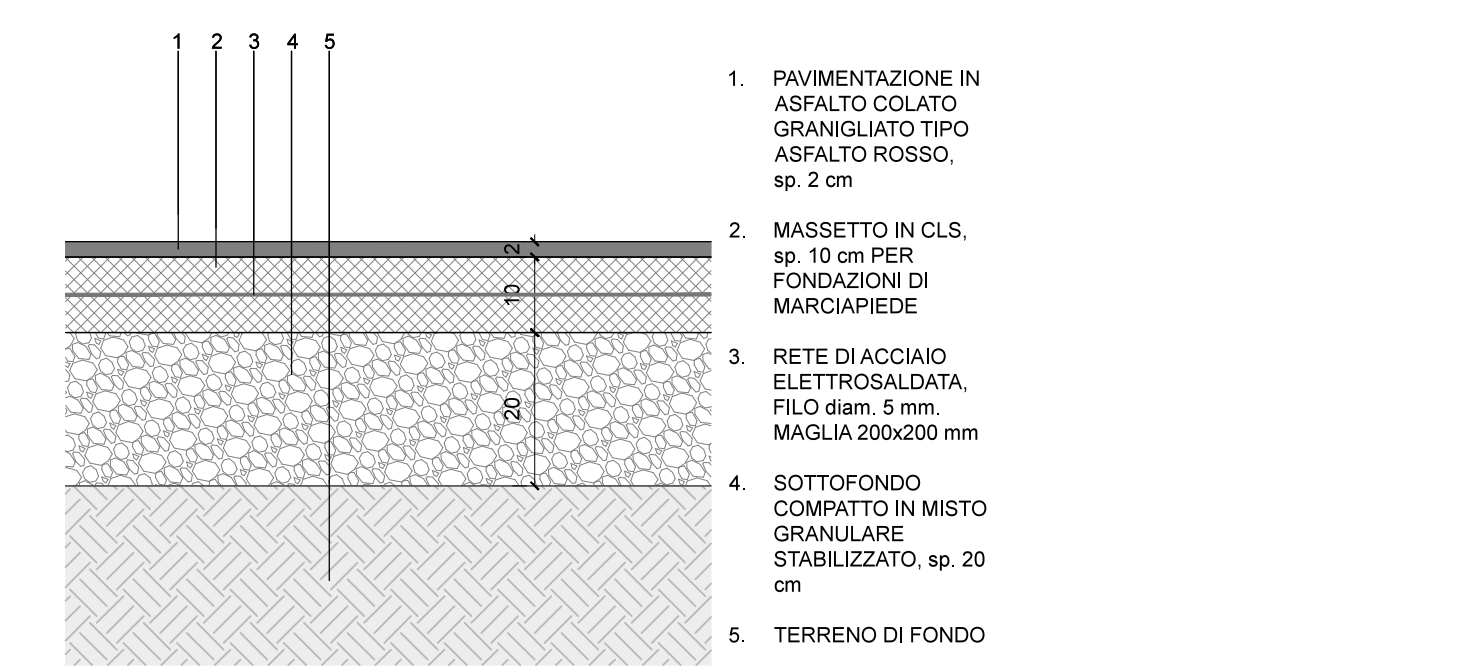
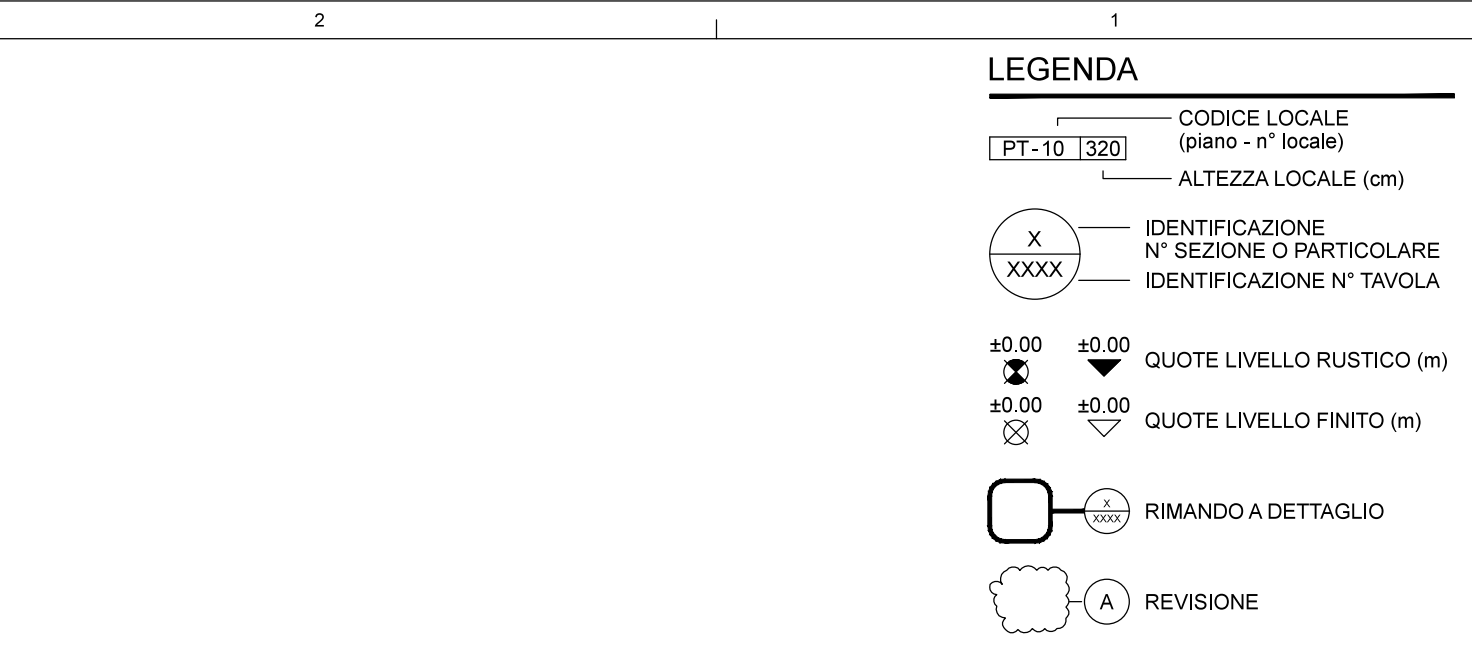
4 SEZIONE PARCHEGGIO 12  
1:100



5 SEZIONE PARCHEGGIO 13  
1:100



6 SEZIONE PARCHEGGIO 14  
1:100



**wip** Work in Progress Srl  
Corso di Roma, Roma, 4  
00122 Milano  
L. 06/02/1963/1700  
www.wip.it

comitente: SAVILLS INVESTMENT MANAGEMENT SGR SpA  
FONDO ANDROMEDA IN LIQUIDAZIONE

**P.I.I. QUARTIERE STAZIONE**

commissari: file  
14-20 PASE PASE-FA2-5.2  
data emissione: 23.09.2016 revisione: designato controllo approvato: DG EG LV  
**VARIANTE**

STATO DI PROGETTO  
PARCHEGGI  
PIANTE SEZIONI E DETTAGLI

cod. elaborato: scala  
**5.2** rev 1:100  
ago 2016 1:500

